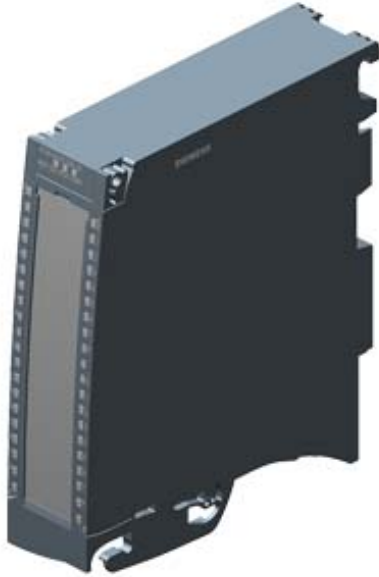


SIMATIC S7-1500, digital output module DQ 32x24 V DC/0.5 A HF; 32 channels in groups of 8; 4 A per group; Single-channel diagnostics; Substitute value: Front connector (screw terminals or push-in) to be ordered separately



General information	
HW functional status	FS02
Firmware version	V1.1.0
Product function	
<ul style="list-style-type: none"> I&M data 	Yes; I&M0 to I&M3
Engineering with	
<ul style="list-style-type: none"> STEP 7 TIA Portal configurable/integrated as of version 	V13 SP1 / -
<ul style="list-style-type: none"> PROFIBUS as of GSD version/GSD revision 	V1.0 / V5.1
<ul style="list-style-type: none"> PROFINET as of GSD version/GSD revision 	V2.3 / -
Operating mode	
<ul style="list-style-type: none"> DQ 	Yes
<ul style="list-style-type: none"> DQ with energy-saving function 	No
<ul style="list-style-type: none"> PWM 	No
<ul style="list-style-type: none"> Cam control (switching at comparison values) 	No
<ul style="list-style-type: none"> Oversampling 	No
<ul style="list-style-type: none"> MSO 	Yes
<ul style="list-style-type: none"> Integrated operating cycle counter 	Yes

Supply voltage	
Rated value (DC)	24 V
permissible range, lower limit (DC)	20.4 V
permissible range, upper limit (DC)	28.8 V
Reverse polarity protection	Yes; through internal protection with 7 A per group
Input current	
Current consumption, max.	60 mA
Output voltage	
Rated value (DC)	24 V
Power	
Power available from the backplane bus	1.1 W
Power loss	
Power loss, typ.	3.5 W
Digital outputs	
Type of digital output	Transistor
Number of digital outputs	32
Current-sourcing	Yes
Digital outputs, parameterizable	Yes
Short-circuit protection	Yes; Clocked electronically
• Response threshold, typ.	1 A
Limitation of inductive shutdown voltage to	L+ (-53 V)
Controlling a digital input	Yes
Switching capacity of the outputs	
• with resistive load, max.	0.5 A
• on lamp load, max.	5 W
Load resistance range	
• lower limit	48 Ω
• upper limit	12 k Ω
Output voltage	
• for signal "1", min.	L+ (-0.8 V)
Output current	
• for signal "1" rated value	0.5 A
• for signal "1" permissible range, max.	0.5 A
• for signal "0" residual current, max.	0.5 mA
Output delay with resistive load	
• "0" to "1", max.	100 μ s
• "1" to "0", max.	500 μ s
Parallel switching of two outputs	
• for logic links	Yes
• for uprating	No

<ul style="list-style-type: none"> • for redundant control of a load 	Yes
Switching frequency	
<ul style="list-style-type: none"> • with resistive load, max. 	100 Hz
<ul style="list-style-type: none"> • with inductive load, max. 	0.5 Hz; According to IEC 60947-5-1, DC-13
<ul style="list-style-type: none"> • on lamp load, max. 	10 Hz
Total current of the outputs	
<ul style="list-style-type: none"> • Current per channel, max. 	0.5 A; see additional description in the manual
<ul style="list-style-type: none"> • Current per group, max. 	4 A; see additional description in the manual
<ul style="list-style-type: none"> • Current per module, max. 	16 A; see additional description in the manual
Cable length	
<ul style="list-style-type: none"> • shielded, max. 	1 000 m
<ul style="list-style-type: none"> • unshielded, max. 	600 m
Isochronous mode	
Isochronous operation (application synchronized up to terminal)	Yes
Execution and activation time (TCO), min.	70 µs
Bus cycle time (TDP), min.	250 µs
Interrupts/diagnostics/status information	
Diagnostics function	Yes
Substitute values connectable	Yes
Alarms	
<ul style="list-style-type: none"> • Diagnostic alarm 	Yes
<ul style="list-style-type: none"> • Maintenance interrupt 	Yes
Diagnostic messages	
<ul style="list-style-type: none"> • Monitoring the supply voltage 	Yes
<ul style="list-style-type: none"> • Wire-break 	Yes
<ul style="list-style-type: none"> • Short-circuit 	Yes
<ul style="list-style-type: none"> • Group error 	Yes
Diagnostics indication LED	
<ul style="list-style-type: none"> • RUN LED 	Yes; Green LED
<ul style="list-style-type: none"> • ERROR LED 	Yes; Red LED
<ul style="list-style-type: none"> • MAINT LED 	Yes; Yellow LED
<ul style="list-style-type: none"> • Monitoring of the supply voltage (PWR-LED) 	Yes; Green LED
<ul style="list-style-type: none"> • Channel status display 	Yes; Green LED
<ul style="list-style-type: none"> • for channel diagnostics 	Yes; Red LED
<ul style="list-style-type: none"> • for module diagnostics 	Yes; Red LED
Potential separation	
Potential separation channels	
<ul style="list-style-type: none"> • between the channels 	No
<ul style="list-style-type: none"> • between the channels, in groups of 	8
<ul style="list-style-type: none"> • between the channels and backplane bus 	Yes

Isolation	
Isolation tested with	707 V DC (type test)
Standards, approvals, certificates	
Suitable for safety functions	No
Suitable for safety-related tripping of standard modules	Yes; From FS02
Highest safety class achievable for safety-related tripping of standard modules	
<ul style="list-style-type: none"> • Performance level according to ISO 13849-1 • Category according to ISO 13849-1 • SILCL according to IEC 62061 	PL d Cat. 3 SILCL 2
Decentralized operation	
Prioritized startup	Yes
Dimensions	
Width	35 mm
Height	147 mm
Depth	129 mm
Weights	
Weight, approx.	280 g
last modified:	08/30/2019